

Grinding Techniques (Pty) Ltd.

ON THE CUTTING EDGE OF TECHNOLOGY




ISO 9001:2000





Founded in 1981, Grinding Techniques (Pty) Ltd. is the largest privately owned abrasive manufacturer in Africa, operating under the principal business ethos of developing mutually beneficial business partnerships with our valued customers.



A wide spectrum of quality Bonded Abrasives are manufactured to ISO 9001:2000 standards; the company also converts Coated Abrasives, and markets Tungsten Carbide Burrs, diamond products and other ancillary items. In addition, Grinding Techniques (Pty) Ltd. is the Southern African agent for Tyrolit abrasives. The company distributes through a network of branches in South Africa, and exports extremely successfully on a worldwide basis.



Grinding Techniques (Pty) Ltd. is an equal opportunity employer, committed to environmental protection and constant product improvement through ongoing research.



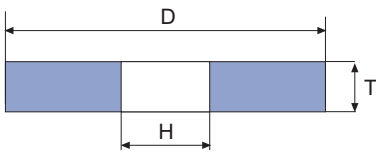
INDEX

FOREWORD	2
TECHNICAL INFORMATION	
BONDED ABRASIVES	3
1. Abrasive Type	4/5
2. Grit Size	5/6
3. Grade	6/7
4. Structure	7/8
5. Bond Types	8
6. Additional Components	8
WHEEL MARKINGS/FLANGE SIZES	9
DIMENSIONS AND SHAPES	10
ISO METRIC STANDARDS FOR GRINDING WHEELS	11
SAFETY IN GRINDING/STORAGE/MOUNTING/RING TEST	12/13
COATED ABRASIVES/SUPERABRASIVES	13
SURFACE GRINDING:	
Straight Wheels	14/15
Cup Wheels and Cylinders	16/17
Segments	18/19
EXTERNAL CYLINDRICAL GRINDING	20 - 23
INTERNAL CYLINDRICAL GRINDING	24/25
CENTRELESS GRINDING	26 /27
TOOL & CUTTER GRINDING	28 - 31
MINING WHEELS	32
SAW SHARPENING	33
THREAD GRINDING WITH MULTI-RIB WHEELS	34
THREAD GRINDING WITH SINGLE-RIB WHEELS	35
GEAR GRINDING	36/37
BENCH & FLOORSTAND GRINDING	38
SNAGGING: BENCH, FLOORSTAND AND SWINGFRAME GRINDING	39
GRINDING ON PORTABLE MACHINES	40/41
CONES & PLUG WHEELS WITH INSERTED NUTS	42
SLIMLINE CUTTING WHEELS	43
CUTTING & GRINDING ON PORTABLE MACHINES	44/45
CUTTING OFF ON STATIONARY MACHINES	46/47
MOUNTED POINTS & WHEELS	48 - 50
HI-GLO POLISHING POINTS	51
OILSTONES, BRICKS, STICKS & GRAIN	52
BONDED MISCELLANEOUS	53
AUTOMOTIVE ENGINE RECONDITIONING	54 - 58
DRESSING TOOLS	59/60
DIAMOND DRESSERS	61/63
TUNGSTEN CARBIDE BURRS	64/65
SANDPAPER GUIDE	66
ABRASIVE ROLLS	67
ABRASIVE DISCS	68
FLAP DISCS FOR PORTABLE MACHINES	69
ABRASIVE SHEETS: BULK PACKS	70
ABRASIVE SHEETS: PRE-PACKS	71
ABRASIVE BELTS	72 - 74
EVENRUN BANDS/SPIRABANDS/NO LAP SLEEVES	75
SPINDLE MOUNTED/ARBOR MOUNTED FLAP WHEELS	76
COATED MISCELLANEOUS	77
DIAMOND SAWS/DIAMOND WHEEL SHAPES	78/79
DIAMOND & CBN ABRASIVES	80/81
NON-WOVEN ABRASIVES	82
SPEED CONVERSION TABLE	83
ORDER FORM	84



SPECIFICATIONS

SHAPE 1 Straight grinding wheels

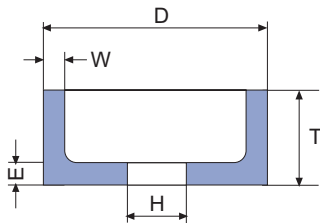


ORDERING DATA:

Diameter (D) x Thickness (T) x Hole size (H)
- Specification - Shape 1

D	T	H
40	13	13
	20	9,53
50	13/20	9,53
65	13	9,53
	20	9,53
80	13	9,53 12,70
	20	9,53 12,70 15,88
100	13	9,53 12,70 15,88
	20/25	9,53 12,70 15,88 20,00
125	13/20/25	15,88 20,00 22,23
150	13/20/25	15,88 20,00 22,23
200	25	15,88 20,00 22,23

SHAPE 6 Straight cup wheels

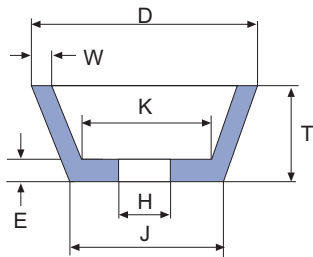


ORDERING DATA:

Diameter (D) x Thickness (T) x Hole size (H) - Specification
- Rim width (W) x Back thickness (E) - Shape 6

D	T	H	W
150	50	22,23	40 20
150	65	5/8 BSW	42 20
150	75	5/8 BSW	25 20

SHAPE 11 Flaring cup wheels



ORDERING DATA:

Standard sizes:

Diameter (D)/Diameter (J) x Thickness (T)
x Hole size (H) - Specification - Shape 11

Non-standard sizes:

All above information plus dimensions W, E and K

All dimensions in millimetres.

D	T	H	W	E	J
80	50	5/8 BSW	17	16	54 28
110	55	22,23	20	12	90 48
125	50	22,23	25	20	100 54
		5/8 BSW			48
		M14 - 1,5			48
150	50	22,23	25	20	120 70
		5/8 BSW			
		M14 - 1,5			

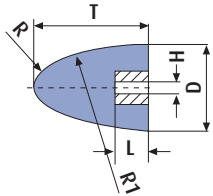
APPLICATION TABLE

FIELD OF APPLICATION	SPECIFICATIONS		
SNAGGING 45 m/s	SHAPE 1		SHAPE 6 SHAPE 11
Material	ø50-80mm	ø100-120mm	
Aluminium, Brass & Bronze Castings	6C20 R5B2H	6C20 R5B2H	6C20 R5B2H
Billets – High Carbon Alloy, Tool Steel & Stainless Steel. Malleable Iron & Steel Castings. Carbon & Stainless Steel Welds.	A30 T5B2H	A&ZZ, 16-20 R to S grade -5B2H	A&ZZ, 16-20 R to S grade -5B2H
Grey Iron Castings	6C20 T5B2H	6C20 T5B2H	6C20 R to T grade -5B2H
General Purpose Steels	A30 T5B2H	A, 16-20 R to S grade -5B2H	A, 16-20 R to S grade -5B2H
General Purpose - Non-ferrous & Non-metallics	6C20 R5B2H	6C20 R5B2H	6C16 R5B2H 6C20 R5B2H 6C24 R5B2H

IMPORTANT NOTE: For safety reasons, Vitrified Bonded Grinding Wheels must never be used on portable machines.

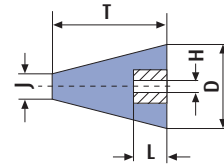
SPECIFICATIONS

SHAPE 16 Cone, curved side



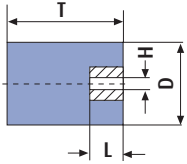
ORDERING DATA:
Diameter (D) x Thickness (T) x Insert type (H)
- Specification - Shape (S16)

SHAPE 17 Cone, straight side



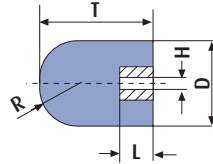
ORDERING DATA:
Diameter (D)/ Diameter (J) x Thickness (T)
x Insert type (H) - Specification - Shape (S17)

SHAPE 18 Plug, square end



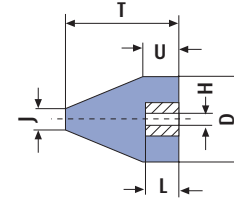
ORDERING DATA:
Diameter (D) x Thickness (T) x Insert type (H)
- Specification - Shape (S18)

SHAPE 18R Plug, round end



ORDERING DATA:
Diameter (D) x Thickness (T) x Insert type (H)
- Specification - Shape (S18R)

SHAPE 19 Plug, conical end



ORDERING DATA:
Diameter (D) x Thickness (T) x Insert type (H)
- Dimension (U) - Specification - Shape (S19)

SHAPE	D	J	T	INSERT H
16	40		80	5/8 BSW
	40		80	M14 - 1,5
	50		80	5/8 BSW
17	70	60	80	5/8 BSW
18	65		50	5/8 BSW
18R	40		80	5/8 BSW
	40		80	M14 - 1,5

APPLICATION TABLE

FIELD OF APPLICATION		SPECIFICATIONS
General Purpose	Steels	A16 T5B2H
	Non-ferrous and non-metallics, aluminium, brass and bronze castings	6C20 S5V55
Billets	High carbon alloy, tool steels and stainless steel	11A36 R6V86 11A30 R5V86 11/31A 30R486
Grey Iron Castings		6C20 S5V55 11/31A30 R4V86
Malleable Iron and Steel Castings		A16 R5B2H 11A36 R6V86 11A30 R5V86 11/31A30 R4V86
Carbon Steel Welds		A16 R5B2H A16 T5B2H
Stainless Steel Welds		A16 R5B2H A46 R5B2H

All dimensions in millimetres.

The specifications in this catalogue are recommendations only. For further information or special application specifications, please contact Grinding Techniques Technical Department (011) 271 6400 or email: info@grindtech.com